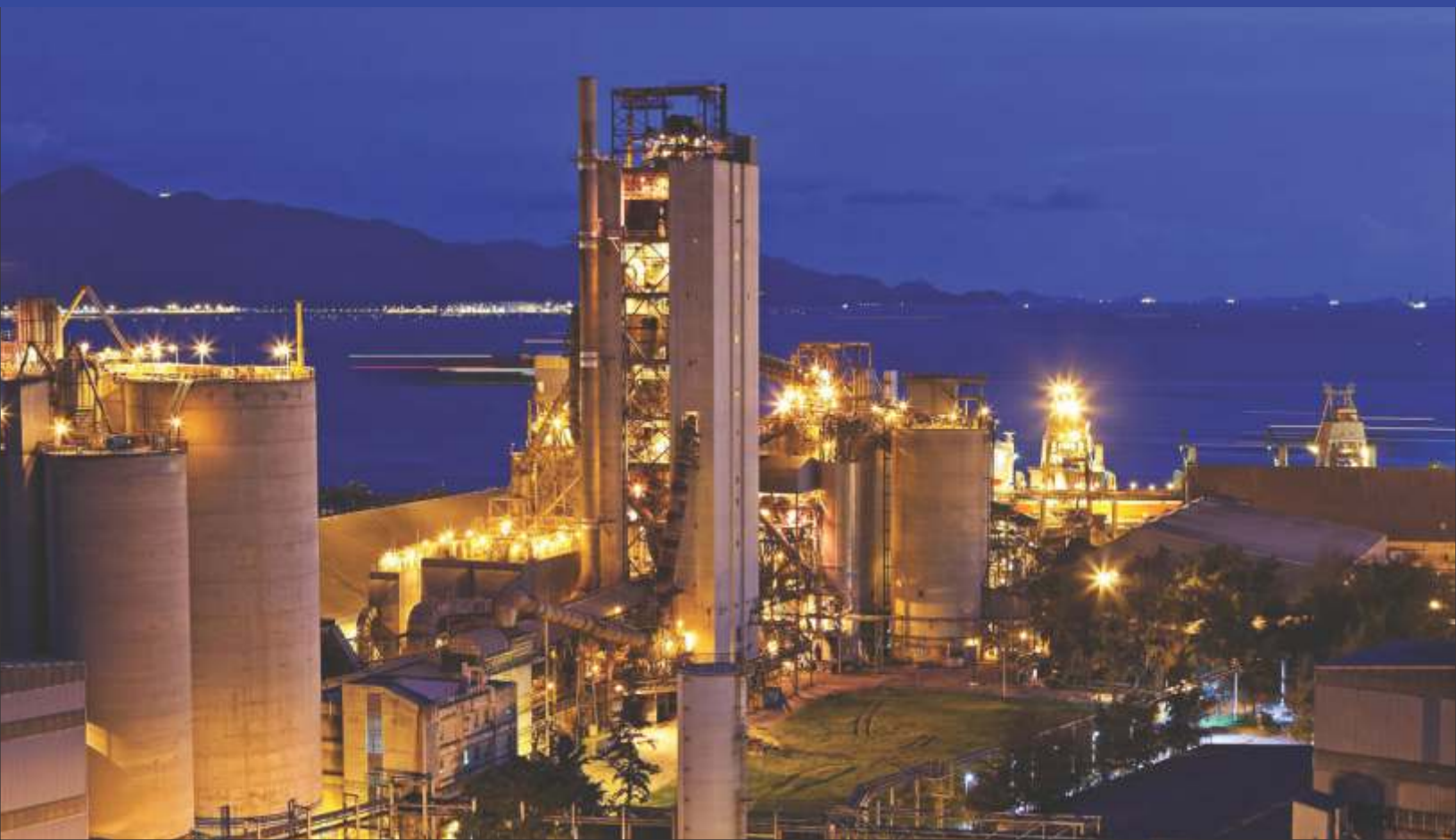




# **TECHNOCEM SYSTEMS INDIA PVT. LTD.**

*Engineering Excellence..... Redefined*



## ABOUT US

Technocem was born in the year 1996 and has evolved as a reliable Designer, manufacturer and supplier of unparalleled range of Material Handling and other Cement Plant Equipments. These products are manufactured by utilizing latest machinery and advanced technology. The products manufactured by us are customized for best Design, Ruggedness, Reliability and Efficiency. Additionally we render prompt and timely Engineering and Consultancy services. These services are acknowledged for the appropriate solutions and cost effectiveness to the specific problems of the patrons.

Our company believes in the absolute concept of superiority of Quality. Therefore, we take all the required measures to offer impeccable products and services for the convenience of our patrons. Owing to this commitment, we have carved an enviable position as a reputed organization catering to the various requirements of Cement Plants. We are aided by a sprawling and well furnished infrastructure unit that facilitates manufacturing an impeccable Product line. It also enable us quality testing of our products, so that they can beat the best in the industry.

We at Technocem, lay strong emphasis on the strict and timely delivery commitment, technical support and that too at the most optimum cost.

### Working Philosophy

- Dedication of our engineers in dealing various projects from conceptualization to commissioning.
- Past experiences of our engineers, who have worked in their respective fields in the various segments of the cement industry.
- Our working model of maintaining discipline and commitment within every stage of a project.
- Always to welcome the ideas from our clients for conceptualization and then to sort out the best ideas from the better ideas, as we believe that a user is always the best designer also
- Our experience of satisfying over 50 clients in India and abroad.

# SERVICES OFFERED



- Feasibility Studies
- Pre Engineering including Drawings and Detailing
- Equipment Designing and Manufacturing
- Erection and Commissioning.
- Conversion/Upgradation/Retrofitting of old Equipments, Like-Packers and Bucket Elevators etc.
- Conversion of open circuit Cement Mills to closed circuit Cement Mills for Output Enhancement.
- Plant Optimization for Output and Quality Enhancement
- Maintenance of existing plants and Troubleshooting.
- Various other Engineering and Consultancy Services related to cement Plants.
- Supply of critical and non critical spares for complete Cement Plant.

# PRODUCT GALLERY

Technocem is involved in designing, manufacturing and commissioning of various customized products which include-

- Silo Equipments including Air Slides, Flow Control Gates, Pneumatic and Manual Cut Off Gates.
- Bag Diverters (Pneumatic and Motorized)
- Air slide Diverting Gates.
- Bulk Loading Systems.
- Cycling Valves for Air Distribution in Blending Silo.
- Double Flap Gates
- Air Balance Valves
- Rotary Air Locks
- Screw Conveyors
- Sector Gates
- Needle Gates
- Bottom Discharge Gates
- Bucket Elevators (Belt Type and Retrofitting of old Chain Type Bucket Elevators)
- Cement Packing Machines
- Truck Loading Machines
- Screw Samplers
- Guillotine and Multi Louver Dampers for Coal Mill, Bag House (up to the size of 3000 mm)
- Classifiers
- Spiral Chutes
- Customized Material Handling Systems
- Packer Electronic Controllers (MECN and Unipulse )





Closed Air Slide



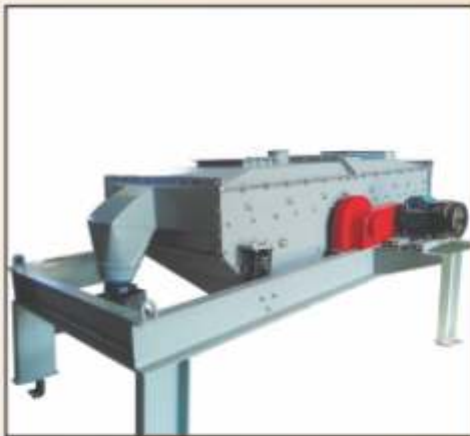
Silo Lump Crusher for Air Slide



Motorized Curved Gate



Silo Aerated Bottom



Vibrating Screen



Roller Chute



Pneumatic Rotary Shut Off Gate



Needle Gate



Pneumatic Knife Gates



Lump Breaker



Pneumatic Bag Diverter



Screw Conveyor Flight



Cycling Valve-250 NB



Motorized Flow Control Gate/  
Dozing Valve



Bulk Loading Spout



Motorized Air Slide Diverter



Guillotine Damper-950 mm



Manual Slide Gate Size 2500 x 1500





# CUSTOMIZED EQUIPMENTS



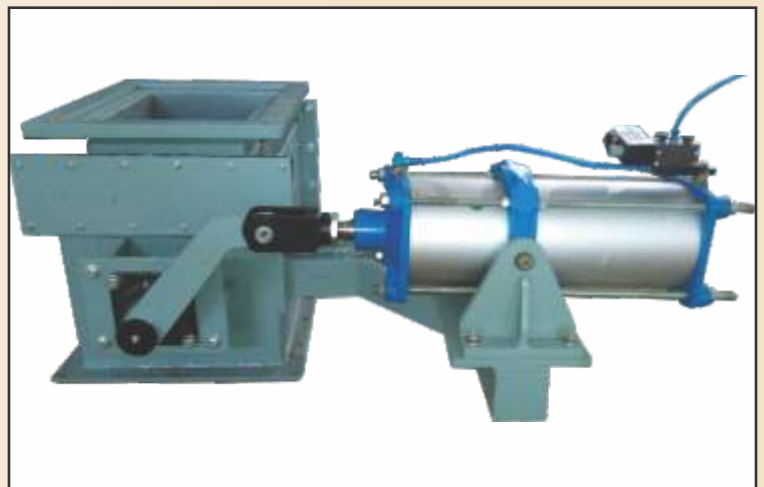
MultiLouver Dampers,Dia-500



Motorized Butterfly Damper



Pneumatic Y Type Diverter



Pneumatic Isolation Valve

# ELECTRICAL & INSTRUMENTATION

## **Packer Upgradation and new Electronic Controllers-**

We are a reputed manufacturer of Packer Weighing Electronic Controllers. We are also recognized experts of conversion of old mechanical packers to the new state of the art Electronic Packers. We are also catering our clients with the latest Unipulse Weighing Controllers from Unipulse Corporation, Japan.



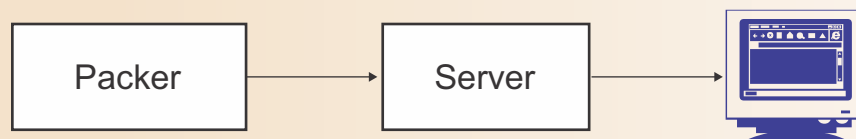
## **Management Information Systems for Packer Dispatch Monitoring-**

We have developed our own Packer Performance and On-Line Dispatch Monitoring System Software (PACK-LINK)

### **About PACK-LINK**

PACK-LINK is an integrated multi-user system of dispatch monitoring. It is a unidirectional system that consists of a server unit, which captures data from your Packers during the dispatch and sends this data to your computer having dedicated software for the report generation in a vast range of formats. The reports generated in terms of output and weighments helps the maintenance engineers to be equipped with a trend of Packer performance, so that they can undertake the Packer maintenance depending on their analysis.

Scheme





## Bad BAG Tracking System/Check weighing-

This new system is an extension of the PACK-LINK system, already working at various sites. In this system the existing software has been upgraded further to drive a DIDO (Digital Input Digital Output) card, which accepts a digital input corresponding to any bag lower in weight than a prescribed limit as well as higher than a set limit and generates a digital output against this event. This digital output drives relays in the Bad Bag Tracking (BBT) panel, which can further drive an audio alarm as well as can trip the belt conveyor. The output of the system can be 110VAC/220VAC/24 VDC.

## PackLink Screen

Packer1	Packer2	Packer3	Packer4	Packer5	Packer6	Packer7	Packer8
Spout No	Number of Bags	Current Wt. in Kilogram	Target Wt. in Kilogram	Average Wt. in Kilogram	Total Wt. in Tonnes	Deviation in Kilogram	
1	0	0.000	0.000	0.000	0.000	0.000	
2	0	0.000	0.000	0.000	0.000	0.000	
3	0	0.000	0.000	0.000	0.000	0.000	
4	0	0.000	0.000	0.000	0.000	0.000	
5	0	0.000	0.000	0.000	0.000	0.000	
6	0	0.000	0.000	0.000	0.000	0.000	
7	0	0.000	0.000	0.000	0.000	0.000	
8	0	0.000	0.000	0.000	0.000	0.000	
9	0	0.000	0.000	0.000	0.000	0.000	
10	0	0.000	0.000	0.000	0.000	0.000	
11	0	0.000	0.000	0.000	0.000	0.000	
12	0	0.000	0.000	0.000	0.000	0.000	
13	0	0.000	0.000	0.000	0.000	0.000	
14	0	0.000	0.000	0.000	0.000	0.000	
15	0	0.000	0.000	0.000	0.000	0.000	
16	0	0.000	0.000	0.000	0.000	0.000	

1
Packing Start Date: 5/21/2014
Packing Start Time: 12:09:00 PM
Total No. of Bags: 0.000
Total Wt. in Tonnes: 0.000
Average Wt. in Kg.: 0.000
Average Deviation in Kg.: 0.000

Refresh

Spout No	Number of Bags	Current Wt. in Kilogram	Target Wt. in Kilogram	Average Wt. in Kilogram	Total Wt. in Tonnes	Deviation in Kilogram	
1	0	0.000	0.000	0.000	0.000	0.000	
2	0	0.000	0.000	0.000	0.000	0.000	
3	0	0.000	0.000	0.000	0.000	0.000	
4	0	0.000	0.000	0.000	0.000	0.000	
5	0	0.000	0.000	0.000	0.000	0.000	
6	0	0.000	0.000	0.000	0.000	0.000	
7	0	0.000	0.000	0.000	0.000	0.000	
8	0	0.000	0.000	0.000	0.000	0.000	
9	0	0.000	0.000	0.000	0.000	0.000	
10	0	0.000	0.000	0.000	0.000	0.000	
11	0	0.000	0.000	0.000	0.000	0.000	
12	0	0.000	0.000	0.000	0.000	0.000	
13	0	0.000	0.000	0.000	0.000	0.000	
14	0	0.000	0.000	0.000	0.000	0.000	
15	0	0.000	0.000	0.000	0.000	0.000	
16	0	0.000	0.000	0.000	0.000	0.000	

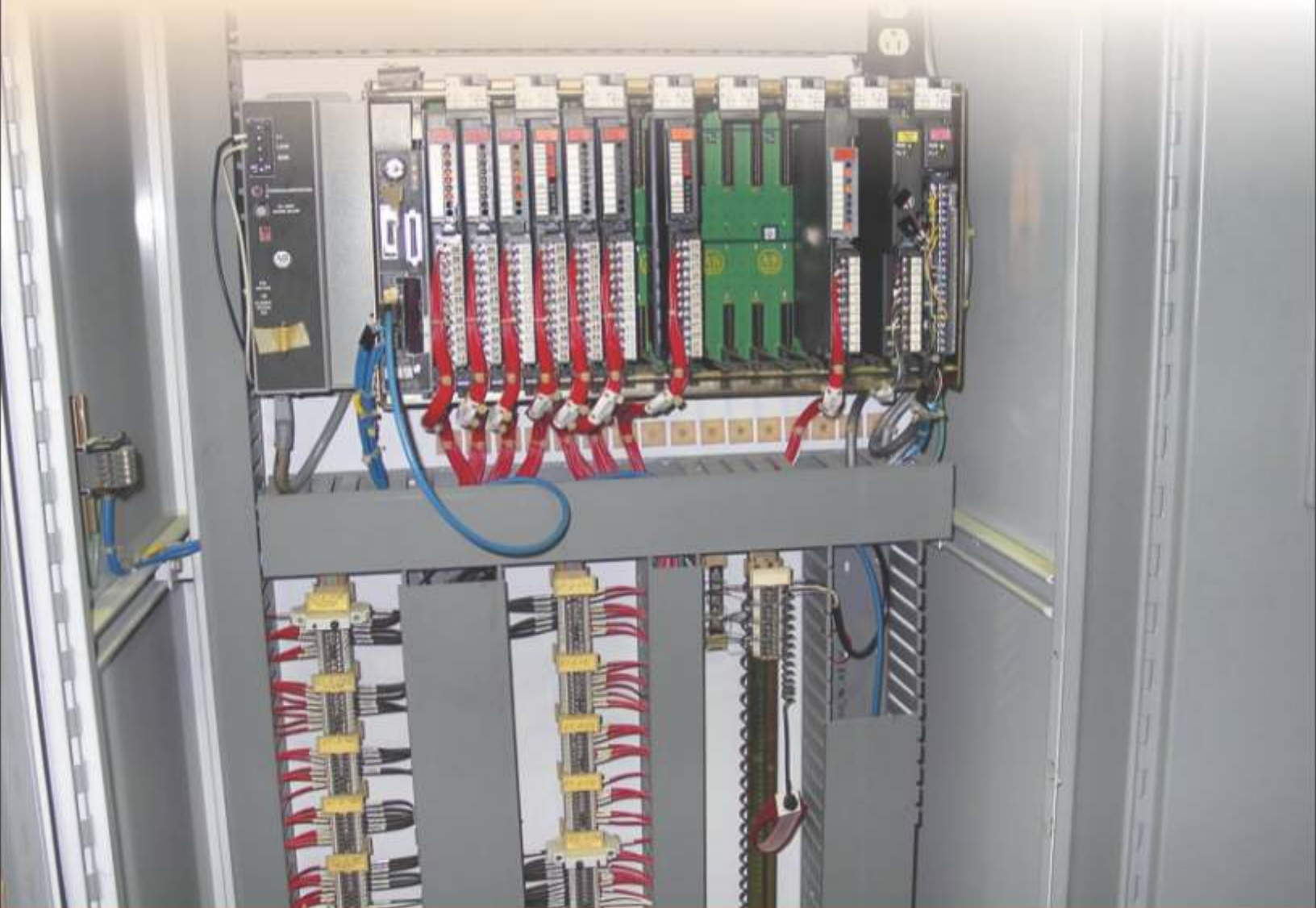
2
Packing Start Date: 5/21/2014
Packing Start Time: 12:09:00 PM
Total No. of Bags: 0.000
Total Wt. in Tonnes: 0.000
Average Wt. in Kg.: 0.000
Average Deviation in Kg.: 0.000

Refresh

# **AUTOMATION & CONTROL SYSTEMS**

We have specialized experts for Plant Automation and Control Systems. We undertake the Design, Supply and Commissioning of PLC, MCC, PCC, SCADA and all type of Sensors.

In addition to this we are also capable of modernizing the old manually operated plants to the new Automatic Plants.



# **UPGRADATION & RETROFITTING**

Technocem is well known for their excellence in Up gradation and Retrofitting jobs, which includes-

- Upgradation of Open Circuit Cement Mills to closed Circuit Cement Mills.
- Upgradation/ Retrofitting of old cement silos.
- Retrofitting of old Chain Type Bucket Elevators to new Belt Type Bucket Elevators
- Retrofitting of old Belt Conveyors.
- Retrofitting of Flyash Handling and conveying systems.
- Upgradation of Old Electronic Packers to new Electronic Packers with communicable Weighing controllers. (Unipulse, Japan)
- Upgradation of Old Bulk Loading Spouts to new type Bulk Loading Spouts with Loss in weight control systems, where there is no facility of weighbridge for accurate filling.
- Upgradation of old Truck Loading Systems to the latest type Loading Systems.

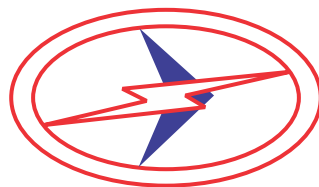
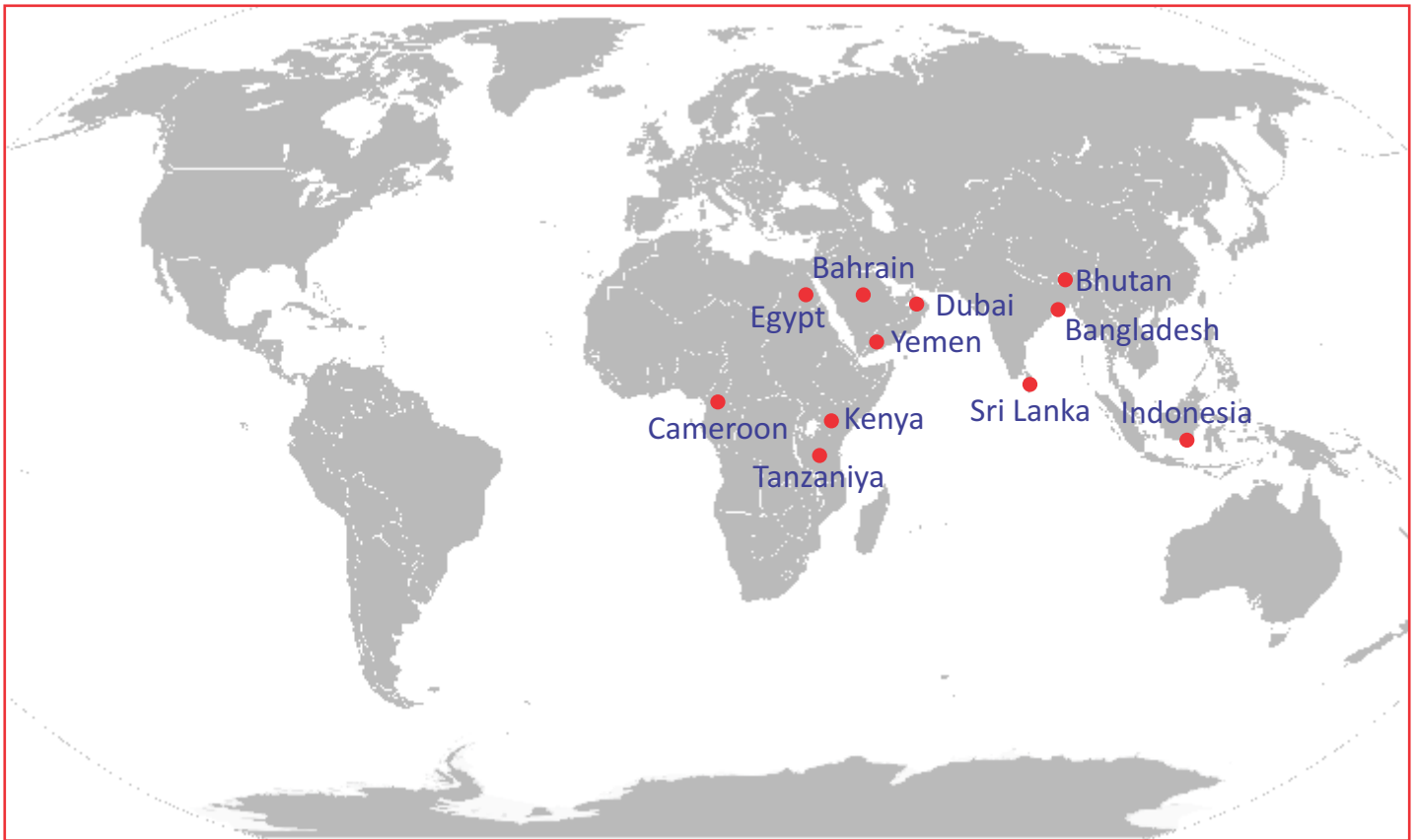
## **SPARES DIVISION**

Technocem is also a reputed supplier of various Critical and Non Critical spares for the complete cement plants, which includes-

- Pneumatics- All cylinders standards well as customized and of all sizes of reputed makes.
- All Solenoid Valves, Auto Drain Valves, Filter units of any specifications.
- Mechanical- All type of mechanical spares for Raw Mill, Kiln Cement Mill, and Packing Plant.
- Electrical –All Type of Motors, Drum Motors, Transformers, Actuators and MCC Spares.
- Instrumentation- Repairing of all Packer Cards, supply of Sensors and strain Gauges including Probes, Load Cells, special type Proximity switches (Inductive and Capacitive), Positioners & PLC's.
- We are also importing several items from various countries like Germany, Netherland, Italy, USA, England and Japan.



## OUR WORLD WIDE PRESENCE



## **TECHNOCEM SYSTEMS INDIA PVT. LTD.**

24/25, Punjabi Bagh Extension, New Delhi-110026 (INDIA)

**Ph :** +91-11-25229724, 45038995 **Fax :** +91-11-25224768 **Mob :** +91 9810097367

**E-mail :** sales@technocem.com, technocem@technocem.com

**Website :** www.technocem.com

### **Works :**

Plot No. 210, Sector-16, Industrial Estate, HSIDC, Bhadurgarh, Distt. Jhajjar,  
Haryana-124507 Ph.: 01276 - 297663